

A vertical bar on the left side of the page, composed of four stacked rectangular blocks in dark red, blue, orange, and red from top to bottom.

**2023 -
Executive
Director**

End of Year Recap



Table of Contents

01	—	Introduction
02	—	OnTrack Greenville Goal Areas
03	—	Strategic Framework
04	—	Invest, Bridge, Evaluate
5–7	—	Partner Updates
8–9	—	Power of Collaboration
10–11	—	Community Engagement
12	—	Financials
13	—	Acknowledgments





Introduction

Dear Stakeholders,

I hope this message finds you well. As we end another impactful year at OnTrack Greenville, I am delighted to present an End of the Year Recap. This report serves as a comprehensive overview of our organization's achievements, challenges, and future plans.

First and foremost, I want to express my deepest gratitude to each and every one of you for your unwavering support, dedication, and belief in our mission. Your commitment has been instrumental in driving our success and making a positive difference in the lives of students and families in our community.

Throughout the year, we have achieved significant milestones and witnessed the transformative power of our programs. From providing educational support to youth to empowering families and staff with resources and assistance, our initiatives have had an impact on the lives of those we serve.

In this report, we will highlight key achievements and share inspiring success stories. We will also discuss the challenges we faced and the valuable lessons we learned along the way. Additionally, we will outline our future plans and goals as we continue to strive for excellence and expand our reach.

None of our accomplishments would have been possible without the collaborative efforts and partnerships we have forged with organizations and individuals who share our vision. We extend our heartfelt appreciation to our valued partners for their unwavering support and dedication to our cause.

Thank you for your unwavering commitment to OnTrack Greenville. Together, we are transforming lives and building a stronger, more resilient community.

Warmest regards,

Dr. Edward J. Anderson
Executive Director



// ONTRACK GREENVILLE
REPORT 2023



OnTrack Greenville

Goal Areas

The mental, physical and social-emotional well-being of students is a key factor to K-12 and post-secondary success. To change the narrative for our students, we must fight against the challenges associated with low socio-economic communities by (1) investing in overall student well-being, (2) providing a clear pathway of support to an on-time graduation, and (3) increasing access to industry certification and/or college credit. We aim to increase the quantity of graduates and also produce a more qualified graduate.



01. Student Well-Being

Mental and Physical well-being plays a significant role in a student's overall development and success. By creating a positive and supportive environment, schools can help students develop the skills they need to thrive both in and out of the classroom.



02. On-Time Graduation

Graduation represents a significant milestone in a person's life and is often celebrated as a rite of passage. Efforts to reduce the high school dropout rate and increase educational attainment can have a positive impact on the economy by increasing earning potential, reducing social welfare costs, and improving overall productivity and competitiveness.

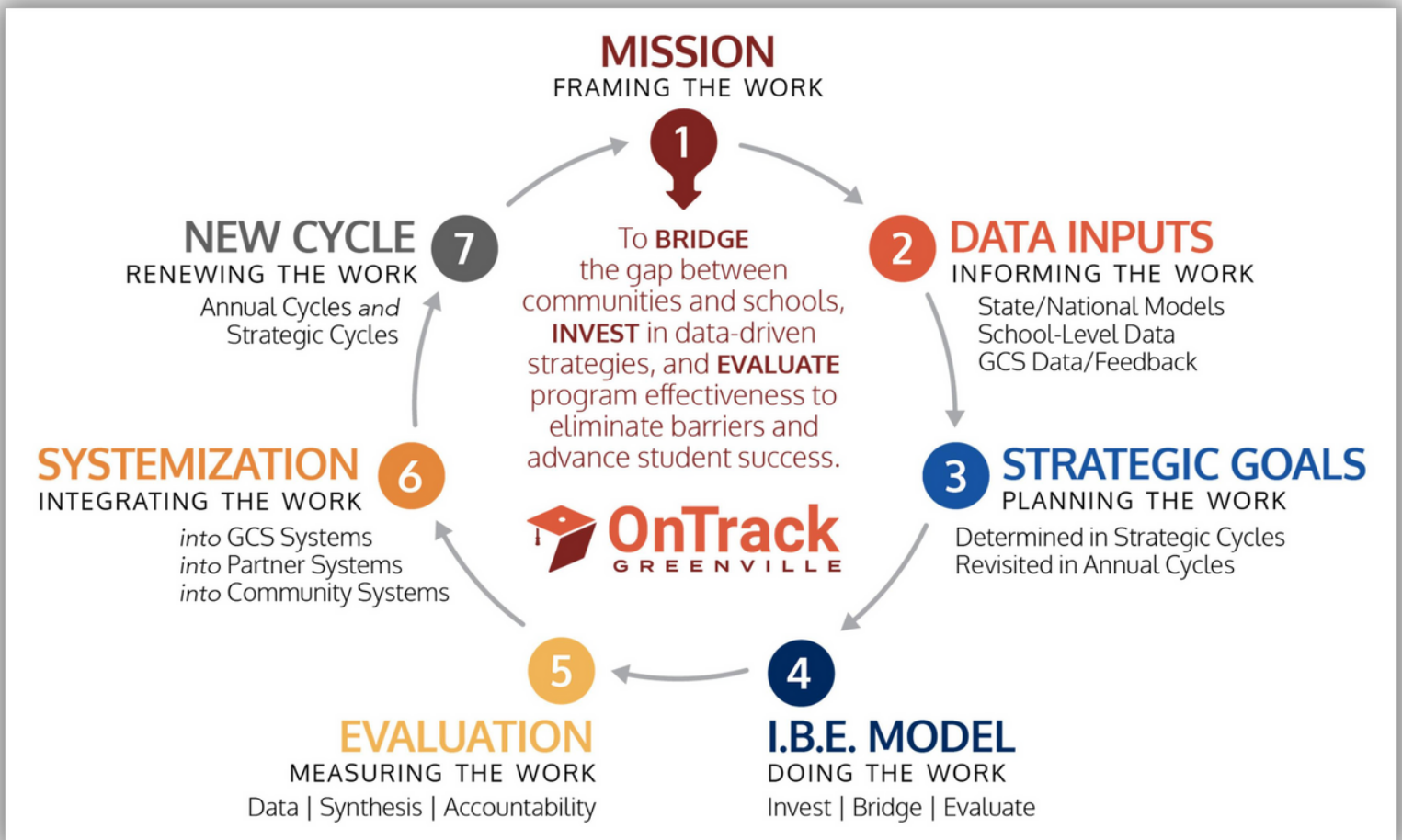


03. Career & College Readiness

Post-secondary skills are important for high school students as they prepare for the next stage of their education and career. By developing these skills early, students can set themselves up for success and smooth transitions into higher education and the workforce.

Strategic Framework

This graphic serves as the roadmap that guides our decision-making and actions towards achieving our mission and goals. It helps us navigate a complex and ever-changing environment while staying true to our values.



We remain committed to investing, advocating, and convening to impact the following systems:

- Barriers associated with transportation, access, opportunity, housing, transiency and trauma.
- Data and evaluation as a tool to make decisions.
- Resources to help retain and recruit high-quality personnel.
- The quantity and quality of community partners connected to schools.
- Real-time feedback and input on findings that inform best practices.



Invest, Bridge, Evaluate

This portion of the strategic framework calls to action how OnTrack Greenville partners generate impact.



Invest

A DELIBERATE ALLOCATION OF FINANCIAL RESOURCES, TIME, OR OTHER ASSETS TOWARDS AN OPPORTUNITY OR INITIATIVE THAT HAS THE POTENTIAL TO GENERATE IMPACT AS WELL AS A RETURN ON THE INVESTMENT.

Supporting Effective Programs and Partners

Collaborative Spaces: Greenville Mentoring Collaborative, Partners Aligned & Collaborating Together (PACT), Greenville County Schools, United Way of Greenville County Resource Navigation, Career-Corp, Greenville Chamber of Commerce, University of South Carolina, National Grad Partnership,

Direct Service: Communities in Schools, Prisma Health, BellXcel, Infinite Possibilities, Public Education Partners, Greenville County Schools, Human Services Research Institute (HSRI), Mentor Upstate, SC Education Association



Bridge

FACILITATING COLLABORATION BY BRINGING DIVERSE GROUPS OF PEOPLE TOGETHER TO WORK TOWARDS A COMMON GOAL; ACTING AS INTERMEDIARIES BETWEEN DIFFERENT SECTORS.

Naming and Overcoming Barriers to Partnership

Collaboration, Inclusion, Advocacy, & Streamlining: Hispanic Alliance, Greenville Technical College, PACT, Greenville County Schools, Greenville Mentoring Collaborative



Evaluate

TO MEASURE THE IMPACT OF PROGRAMS AND SERVICES, TO IMPROVE SERVICES, TO DEMONSTRATE ACCOUNTABILITY, TO INFORM DECISION-MAKING, & TO MEET REPORTING REQUIREMENTS

Increasing Initiative Effectiveness

Ensure Model Fidelity & Share Lessons: Greenville County Schools, Human Services Research Institute, Greenville Mentoring Collaborative, University of South Carolina



Partner Updates

As an intermediary, OnTrack's mission is to bridge the gap between communities and schools, invest in data-driven strategies, and evaluate program effectiveness to eliminate barriers and advance student success. Our vision is a Greenville County where every student achieves their full potential! Check out some of the incredible work from 2023!



BellXcel

70 scholars participated in the BellXcel summer program across three OnTrack Greenville middle schools. Teachers were recruited to staff the program to allow students the chance to create relationships before the transition to middle school. The STAR Assessment provided strong feedback on the social-emotional growth of students and academic gains in math. Caregivers reported that their child had overwhelmingly positive feedback with 9 in 10 enjoying the program, 100% being highly satisfied with the program, and 4 in 5 seeing improvement in their child's reading and math skills. In the 23-24 school year, Berea Middle School is hosting a BellXcel afterschool program. Students are excited to be a part of the program due to academic support being intertwined with enrichment activities. 63 scholars are enrolled with an average daily attendance of 93%.



Communities in Schools

Communities In Schools (CIS) added a CIS Coordinator for a total of 11 across the six OnTrack Greenville Schools. In total, these coordinators have maintained an average caseload of 366, peaking at 488 case-managed students in March. Case managed students received over 12,000 supports ranging from College and Career Prep to Basic Needs Assistance and Life and Social Skills supports. CIS strives to involve the entire family in the progress of a student and has achieved that this year with nearly 2,000 parent interactions. The end of the 2022-23 school year saw a graduation rate of 100% and a promotion rate of 97%. As we hit the halfway point in the 2023-2024 school year, 85% of case-managed students have 3 or fewer absences, 91% have maintained or improved behavior and almost 70% have a C or higher in ELA and Math.



Partner Updates



Greenville Mentoring Collaborative

The Greenville Mentoring Collaborative is the most recent OnTrack Greenville investment, stemming from a multi-year collaborative effort by the Department of Juvenile Justice, Greenville County Schools, the United Way of Greenville County, and Mentor Upstate. The collaborative wrote a white paper in 2019 underscoring the challenges with mentor recruitment and significantly low numbers of student mentors in Greenville County, especially at our highest poverty schools.

Please read more about this initiative's incredible impact using [link](#) or by visiting the [gvlmentoring.org](#) (or Facebook page)



Infinite Possibilities

OnTrack Greenville recognizes the intrinsic connection between a stable family unit and a student's academic success. Infinite Possibilities' (IP) mission is the provision of essential resources—such as rental assistance, utility support, food, clothing, and hygiene supplies—to prevent homelessness and address unsheltered families' immediate needs, going beyond immediate aid by offering comprehensive case management.

IP has provided deep case management to 103 unique students and their families. On a school level, over 1,300 resources were provided including but not limited to hygiene kits, food distribution, and uniform assistance. Over \$43.5K of dollars allocated to stabilize families.



Greenville County Schools

Facilitators: An OnTrack Facilitator's main role is to monitor student performance, identify students falling off track, and lead OnTrack meetings leveraging the Early Warning Response System (EWRS) to assign wrap-around services to students. There is one co-funded (between GCS and OnTrack Greenville) position at each of the 6 OnTrack Greenville schools. As of December 2023, OnTrack Greenville facilitators met and coordinated more than 1282 interventions for 847 students across the six OnTrack Greenville schools.



Partner Updates



Greenville County Schools

Trauma | The Trauma-Informed Specialist works directly with GCS Multi-Tiered Systems of Support Coordinator, Dr. Ellen Hampshire. He develops, coordinates, and implements trauma-informed practices in assigned schools. He works with school and district personnel to implement evidence-based trauma-informed systems to reduce re-traumatization, promote student resilience, and increase positive academic and non-academic outcomes for students.

Menu of Supports | These funds offer schools the resources to provide Tier I, school-wide supports for students, staff, and families. In the second half of the 2022-2023 school year, \$43,600 was utilized resulting in over 10,000 touch points..

In the Fall of 2023, OnTrack Greenville schools have leveraged \$32,947 for high impact events so far in the 2023-2024 academic year. Examples include – American Education Week celebrations, student small group supports, open house, Freshman Academy t-shirts, and two Trunk-or-Treat community events.



Prisma Health

Prisma's School-Based Health Center (SBHC) continues to make a large impact in providing needed services to students without medical homes.

- 5,561 visits since 2015 (includes in-person, telehealth, sports physicals and vaccine) (374 in 2023 plus 30 telehealth visits)
- 1,776 vaccines have been administered to over 950 students since inception in 2018– including 892 Tdap, 501 HPV and 383 Meningococcal (133 in 2023)
- 1,647 sports physicals from 2016-2017 school year through today. Including Special Olympics physicals– 1,669 (294 in 2023)
- SBHC has been vital in the identification of psycho-social screenings and referrals and the top 5 student visit categories in recent years are related to mental health (Anxiety, ADHD, Depression, Other Emotional Disorder)
- 97.3% return to class rate after visiting the clinic and 65 referrals to specialists.



Public Education Partners

Public Education Partners engaged all six OnTrack Greenville schools three times throughout the year providing appreciation cards, food, coffee bars, educational resources, and wellness supplies. PEP leveraged funds to provide 819 5th grade students with over 4900 books to OnTrack Greenville's 10 feeder elementary schools while hosting 473 students & 403 families for Family Reading Nights in partnership with the BellXcel summer program.



Collaborations & Partnerships



Hispanic Alliance

Through key informant interviews, an ongoing theme encountered by OnTrack Greenville has been the barriers undocumented students face when pursuing higher education. In South Carolina, undocumented students cannot attend public university nor are they eligible to receive licensure in over a dozen fields with high earning potential. Recognizing that this is a broader systems-level challenge, OnTrack Greenville began to gather vital details about private universities in South Carolina that admit undocumented students. A comprehensive exploration of over 250 scholarships was conducted, meticulously reviewing applicant requirements, leading to the identification of 93 viable opportunities. Through collaboration with Hispanic Alliance the findings were compiled into two lists accompanied by an overview of terminology, legislation, and Career and Technical Education Information. Rigorous accuracy checks were performed on these documents before being disseminated to OnTrack Greenville staff and school counselors. The project earned recognition from The Presidents Alliance on Higher Education and Immigration in November, and it was subsequently shared with their national mailing list. The Presidents Alliance is looking to integrate this information into their Private Institutions Tool. OnTrack Greenville aims to continue the development of these resources.

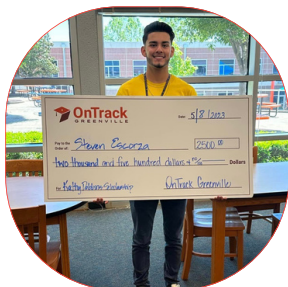


Mentor Upstate

OnTrack Greenville is committed to being nimble, offering new approaches, and leveraging resources to keep OnTrack Greenville's 4,500 youth on track to graduation. Recent additions to OnTrack Greenville's toolbox of interventions include evidence-based mentoring support. Since 2013, Mentor Upstate has closely partnered with Greenville County Schools. The Frazee Center started Mentor Upstate as a "lunch buddy" school mentoring program in response to the growing demand for mentors in Greenville County Schools. Since 2021, 450 mentors have been trained, and 35 Greenville County Schools have an active mentoring program with 15–20 more schools interested in implementing a Mentor Upstate program. Together, OnTrack Greenville, Mentor Upstate, and other mentoring programs will work to expand access and advance evidence-based mentoring interventions that support the academic, social, and emotional success of students in OnTrack Greenville schools and beyond. Through a grant provided by the University of SC via the Duke Endowment, Greenville County Schools and OnTrack Greenville have teamed up to support Mentor Upstate and ensure a consistent pipeline of qualified mentors.



Collaborations & Partnerships



Closing the Gap

In 2022, Dr. David Taylor approached Edward with an idea to support college students throughout their post-secondary journey. The conversation led to a partnership between OnTrack Greenville, BOLD Leadership Network, and BrotherBox, advised by a core group of committed stakeholders to support students' educational journey who may need additional support. The additional support included monthly stipends for students during the post-secondary journeys, care packages, check-ins/mentorship, and access to emergency assistance. Through this partnership, OnTrack scholarship recipients from Berea, Carolina, and Greenville Early College now receive this support. Last year's recipients include Kayla Haong (Berea High / Clemson), and Steven Escorza (Carolina Academy / Spartanburg Methodist) and a recent decision has added former OnTrack scholarship recipient, Kadence Outz (Carolina Academy / Clemson University) to the cohort to support her journey. Each year, students are awarded \$4500 in scholarship funds which multiplies to over \$15,000 for 4 years through the partnership for each cohort of recipients.



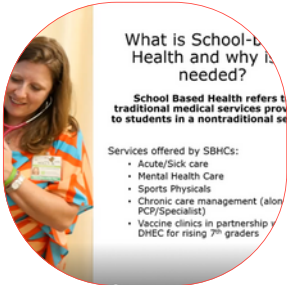
OnTrack Greenville Summit

The summer of 2023 marked a successful event with over 500 school staff from six schools and feeder elementary schools attending to learn about best practices and model fidelity. This opportunity was hosted at the Embassy Suites of Greenville and held over 20 breakout sessions around the theme "Beginning with the end in mind". Powerful keynotes delivered by Julio Hernandez and former Kathy Dobbin's Scholarship Winner Kadence Outz bookended the event. Some of the sessions included:

- Beyond Self-Care: School Mental Health for Faculty and Staff
- Tips for Creating a Trauma-Informed Classroom to Increase Student Well-being
- Preparing Students for College and Career Success with Mentorship
- All Roads Lead Back to Parent and Family Engagement: SC Family Engagement K-12 Framework



Community Engagement



Family Learning Meetings

Family Learning Meetings have been a critical part of the work that OnTrack Greenville has executed to ensure that families receive timely information about community resources available to them. For the past 2 years, we have facilitated virtual sessions with entities and organizations across the county, translated in multiple languages, and housed on our website for families and staff to review. Topics ranged from physical health, emotional and mental well-being, after-school opportunities, housing, financial stability and growth, food security, summer programs, taxes and careers. The social workers, Title I facilitators, front office staff, translators, and family engagement specialists have been essential for the success of these meetings. Hundreds of families have taken part this past year. In addition, any OnTrack family that participates is eligible to receive a \$20 grocery card incentive; and effective tool to encourage more families to engage.

Past Family Learning Meetings can be located on our site at <https://www.ontrackgreenville.org/family-resources>



Student Engagement

By ensuring that all students have access to the arts, college and career tours and speakers, and other experiences that they may not otherwise have, we can help them reach their full potential and create a more vibrant and equitable society.

In 2023, we created student opportunities in collaboration with organizations such as bringing young professional from General Electric to have a conversation with students at Greenville Early College, facilitated student experiences through a partnership with the Peace Center and the Roper Mountain Science Center; co-sponsored Greenville County Schools ACE Awards recognizing resilient students; worked alongside the Greenville Chapter of Delta Sigma Theta for Candid Conversations; and established a "think tank" style set of meetings followed by formal agreements with Greenville Technical College (GTC) representatives to co-develop events in 2024 for OnTrack students and staff.

Community Engagement



PACT

Partners Aligned and Collaborating Together (PACT) is an opt-in network created for the purpose of achieving better results for young people in OnTrack Greenville (OTG) schools through offering, improving, expanding, and sustaining high quality programming.

WHO WE ARE

PACT Members and Partners are individuals and organizations/programs that have agreed to support OnTrack Greenville's mission and vision, are working to support the overall objectives and agree to shared principles. By working collaboratively, PACT works to benefit individuals, community partner organizations, OTG schools, and students.

CURRENT MEMBERS

BOLD Leadership Network	Groom God	National Association for Mental Illness
Career Corp, LLC	Harvest Hope	Peace Center
Department of Juvenile Justice	Hollingsworth Funds	Public Education Partners
Department of Social Services	Infinite Possibilities	Prisma Health
Ezra's Enterprises LLC	Institute for Childhood Success	Rize Prevention
GRAVITY	J. Easterwood Inspires	Self-Care Credit Union
Greater Good Greenville	Just Say Something	St. James Episcopal Men's Group
Greenville Connects	LiveWell Greenville	The HUB
Greenville County Schools	Living for Others	The Phoenix Center
Greenville Financial Empowerment Center	Master Power Transmission	Unity Health on Main
Greenville Homeless Alliance	Metropolitan Arts Council	United Housing Connection
Greenville Housing Authority	Mill Village Ministries	United Ministries
Greenville Mentoring Collaborative	Momentum Bike Club	United Way of Greenville County
Greenville Technical College		Urban League of the Upstate

STUDENT VOICE

OnTrack Greenville is committed to amplifying the voices of students. Student input and agency are key indicators of positive school climate and culture. Student government representatives from OnTrack Greenville high schools participate along side all PACT businesses and organizations to share real-time challenges, needs, and ideas for improving their schools.

GOALS

- Align and leverage external community agencies and supports
- Identify needs of students and schools
- Identify evidence based models to scale
- Build capacity of schools and nonprofits to partner successfully
- Build capacity of schools to access resources
- Garner support from the business community

SCHOOLS WE SERVE

- Berea High School
- Carolina High School
- Greenville Early College
- Berea Middle School
- Lakeview Middle School
- Tanglewood Middle School



To learn more visit: <http://www.ontrackgreenville.org/>
Or contact Kia Keyton at kkeyton@unitedwaygc.org

// **ONTRACK GREENVILLE**
REPORT 2023



2023 at a Glance

ONTRACK GREENVILLE

2023 BUDGET

\$-- Million

REVENUE BREAKDOWN

41%

FOUNDATIONS

18%

UNITED WAY OF GREENVILLE COUNTY,
GRANTS, AND INDIVIDUAL DONORS

24%

DEPARTMENT OF EDUCATION

17%

GREENVILLE COUNTY SCHOOLS (INCLUDING
ESSER FUNDS)

2024 SHIFTS

- EXPLORATION OF NEW FUNDRAISING STRATEGIES WITH 2 GRANTS EXPIRING

Acknowledgements

OnTrack Greenville expresses gratitude to donors, principals, partners, staff, volunteers, families, students, committees, and other supporters.

2023 Donors:

- Hollingsworth Funds
- Jolley Foundation
- Community Foundation of Greenville
- The Department of Education
- Sisters of Charity
- The Leon Levine Foundation
- The United Way of Greenville County
- Lockheed Martin
- The Birk Family Foundation
- Dabo All-In Foundation
- PNC Foundation
- The Rose Ball
- JP Morgan Chase
- Individual Donors

Advisory Board:

- Meghan Barp
- Stacey Mills
- Dr. Burke Royster
- Tamela Spann
- Gage Weekes

District Team:

- Anne Lee Buck
- Phillip Davie
- Dr. Ellen Hampshire
- Whitney Hanna
- Jeff McCoy
- Dr. Jason McCreary
- Dr. David McDonald
- Scott Rhymer
- Eric Williams

OnTrack Principals:

- Jeremy Carrick
- Brianna Falvey
- Marjon Ford
- Mike Noel
- Leroy Platt
- Dr. Nicole Puza
- Dr. Graysen Walles

Implementation Partners & National Partners:

- Human Services Research Institute
- Communities in Schools
- Public Education Partners
- Infinite Possibilities
- Prisma Health
- BellXcel
- The Grad Partnership for Student Success
- American Institutes for Advancing Research (AIR)
- Talent Development Secondary
- John Hopkins University

Contact

OnTrack
Greenville
105 Edinburgh Ct.
Greenville, SC
29607

www.ontrackgreenville.org
[@ontrackgvl](https://twitter.com/ontrackgvl)